

The pensions industry turns to us to solve their data challenges...

...life and general insurance companies want to understand why.

ITM is the UK's largest independent expert and thought leader in pensions and financial services data:

- / Data flows for GDPR
- / Pensions Dashboard readiness
- / Data governance
- / Data migrations
- / System migrations
- / Data strategy
- / Data consulting

Our independence means we give our honest opinions about the options available to you. Our team draws insight from their experience of delivering complex data exercises for some of the UK's largest schemes and providers.

Our credentials

ITM is a leading provider of specialist data management, systems and administrator support services within UK financial services.

The Company was formed in 2003 by Guy Ridley, Grant Stanley and Daniel Hockley who, having identified a service requirement for data compliance within the pension administration industry, decided to build a proposition offering data audit, cleanse and migration consultancy. Since then ITM has cleansed and migrated several million data records – advising more than 1,500 schemes on data and benefit compliance, legacy system migrations and pension fund de-risking issues.



Resources



Whitepapers

Our thoughts on a range of topics, legislative changes and technological trends. Read our latest whitepaper at www.itmlimited.com/itm-publishes-a-new-whitepaper-new-beginnings-why-data-holds-the-key-to-the-future-of-the-life-and-pensions-sector/



Consultations

How can our data, systems and migration expertise help you and your business?



Strategy

Developing, managing and delivering data, systems, migration and process strategies.

About us



Get in touch

Based in the UK, we provide all services inhouse at either our London, Edinburgh or Guildford offices.

Caroline Parker t: 07714 735 511
e: carolineparker@itmlimited.com

Jonathan Hawkins t: 07738 640 039
e: jonathanhawkins@itmlimited.com

You can also connect with us in a number of other ways:

 @ITMLimited

 itmlimited.com

 ITM Limited

www.itmlimited.com/contact
+44 (0) 20 7648 9990
info@itmlimited.com

Contact us

itm

Solution delivered...

- / Data
- / Systems
- / Consultancy

Specialised services life companies and general insurance companies

www.itmlimited.com



eDAaRT / *Data audit and migration platform*

eDAaRT is powerful web based solution which helps financial services professionals control, manage and report on all data migration, data audit and cleansing requirements.

The system boasts a library of data analysis tools to complement all major administration systems.

eArchive / *Data and document management*

eArchive is borne from the eDAaRT migration suite, and allows for the secure storage of a faithful, read-only, copy of legacy data. This gives administrators and governance teams the ability to review historic cases without the costs of migrating legacy records to a new platform.

Systems



From ITM's unique insight gained through the Pensions Dashboard Prototype project, we can help you on all aspects of becoming Dashboard ready:

- / Complete review of platforms and data
- / Data aggregation and cleanse plan specific to needs of Pensions Dashboards
- / Data cleanse and enrichment to enable policyholder identification
- / Data rectification to ensure accuracy of pension benefits data you provide to Pensions Dashboards
- / Subscription based Integration Service handling the complexity of surfacing your policyholders' data to Pensions Dashboards

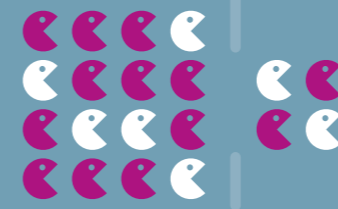
Dashboard

Are you ready for the dashboard revolution?

Do you have a strategy in place?

Do you know where all your data is? What about your legacy systems?

ITM specialises in helping organisations understand their data. We will work with you to outline your data map and review associated data, identifying potential risks in each area. We can help you to restructure, clean and segment data to meet the requirements of GDPR.



Why now is the time to reconsider rationalisation

With developments in approach and technology, rationalisation has become a realistic option:

- / Financial pressure
- / Strategic threat
- / Changing customer demands
- / Maturity of business cases
- / Robust data migration capabilities
- / Recognition that mature, maintainable platforms can be valid targets for migration

Download our platform rationalisation infographic series from our website



Insights

- @ITMLimited
- itmlimited.com
- ITM Limited

+44 (0) 20 7648 9990
info@itmlimited.com