



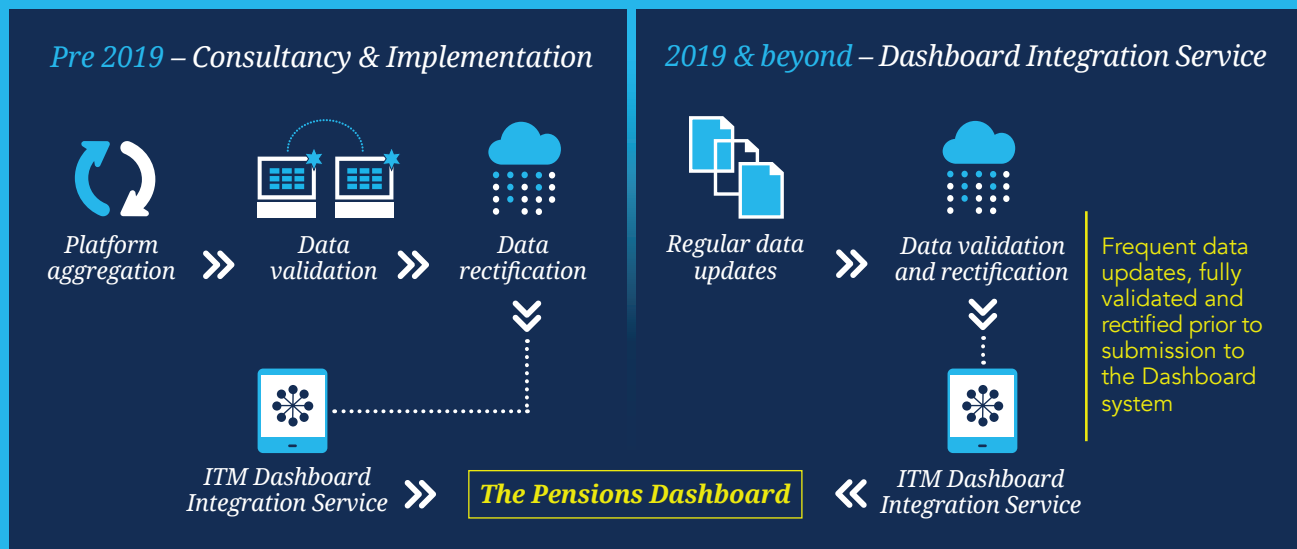
# Are you Dashboard ready?

**During the 2016 Budget, the government made a commitment that Pensions Dashboards would be created by the pensions industry, enabling everyone to view details of all of their pensions together. Government has indicated that every provider will eventually move to sharing data with their customers this way.**

In 2017 ITM was one of 6 Fintech companies heavily involved in building the Prototype. ITM can help you get ahead now and, by having a properly planned data strategy, you can combine work needed for Dashboard with other data projects, thus saving time, effort and money.

Not being Dashboard ready will reduce your members' ability to find their pension details when the Government launches Pensions Dashboards in 2019. Worse still you may provide incorrect or incomplete data to your members. To avoid these outcomes and ensure your participation in Dashboards is seamless, preparation and having a holistic data strategy is key.

## How ITM can help



## Your Dashboard participation made easy

From ITM's unique insight gained through the Pensions Dashboard Prototype project, we can help you on all aspects of becoming Dashboard ready:

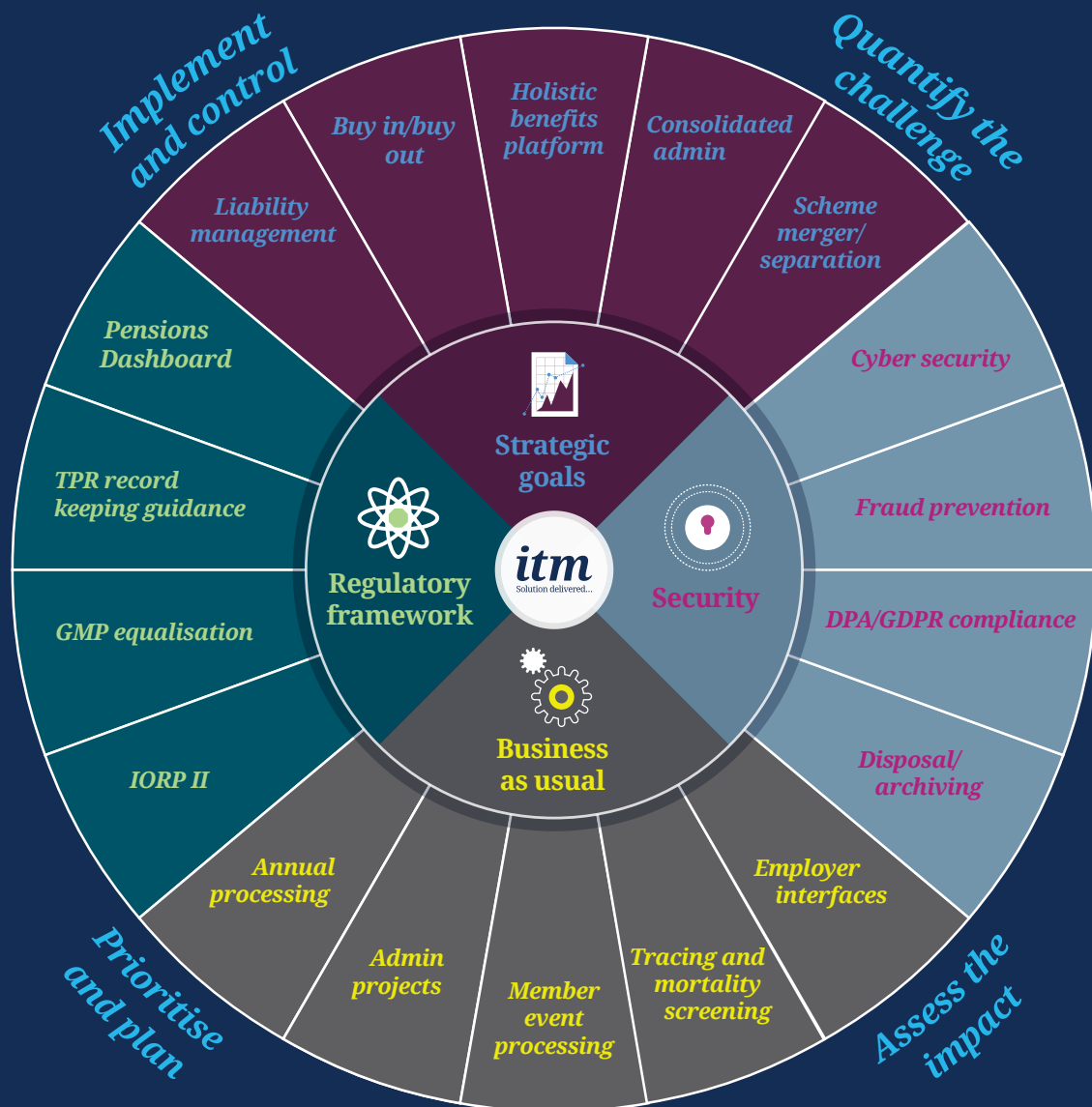
- ▶ Complete review of your platforms and data
- ▶ Data aggregation and cleanse plan specific to the needs of Pensions Dashboards
- ▶ Data cleanse and enrichment to enable member identification
- ▶ Data rectification to ensure accuracy of pension benefits data you provide to Pensions Dashboards
- ▶ Subscription based Integration Service handling the complexity of surfacing your members' data to Pensions Dashboards

# Data management

ITM is one of the six development partners involved in the Pensions Dashboard initiative, placing ourselves firmly at the forefront of pensions data today and into the future.

As part of the successful Pensions Dashboard Prototype project, ITM conducted an analysis of 21 million pension records and determined that key identifying data was missing or invalid for significant numbers of members, particularly for older products and occupational schemes. Whilst previously low impact this missing data will now mean it is not possible to link members to pots via the Dashboard systems. This is just one of the areas where data improvements will be needed to support the Pensions Dashboards.

ITM can also help you build a data management strategy that meets the combined challenges of BAU activity, data security, new regulations and wider pensions related



Please contact us for more information:

☎ 020 7648 9990 ✉ [info@itmlimited.com](mailto:info@itmlimited.com)

**itm**  
Solution delivered...